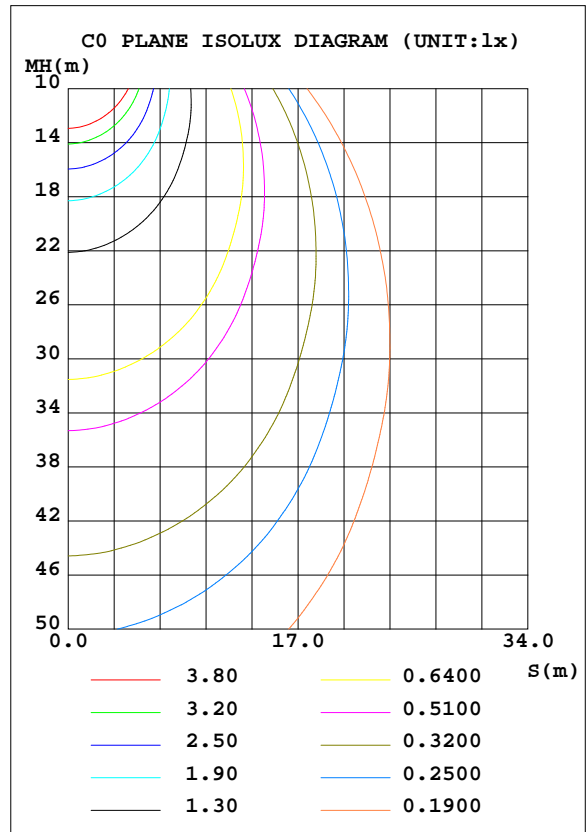
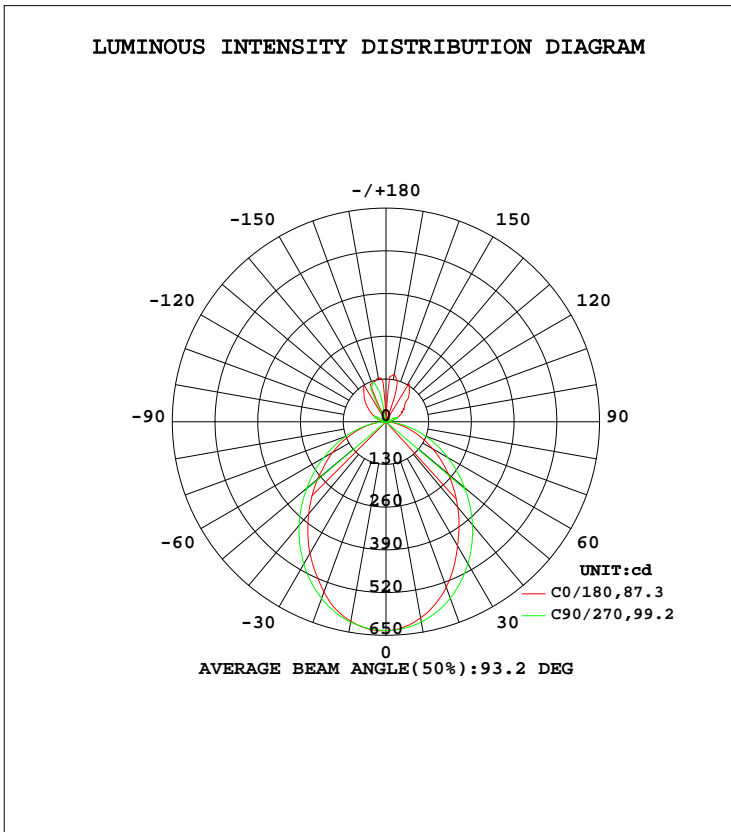


LUMINAIRE PHOTOMETRIC TEST REPORT

Test:U:230.0V I:0.1352A P:30.04W PF:0.9655 Freq:50.01Hz Lamp Flux:1751.13x1 lm		
NAME:	TYPE:LED	WEIGHT:N/A
SPEC.:N/A	DIM.:	SERIAL No.:N/A
MFR.:	SUR.:	Shielding Angle:N/A

DATA OF LAMP		PHOTOMETRIC DATA Eff: 58.30 lm/W			
MODEL	HR-LLB100-30	I _{max} (cd)	636.4	S/MH(C0/180)	1.10
NOMINAL POWER(W)	30	LOR(%)	100.0	S/MH(C90/270)	1.18
RATED VOLTAGE(V)		TOTAL FLUX(lm)	1751.1	η UP, DN(C0-180)	8.5,41.2
NOMINAL FLUX(lm)	1751.13	CIE CLASS	SEMI-D.	η UP, DN(C180-360)	8.4,41.9
LAMPS INSIDE	1	η up(%)	16.9	CIBSE SHR NOM	1.25
TEST VOLTAGE(V)	230	η down(%)	83.1	CIBSE SHR MAX	1.30



C Range: 0 - 360DEG
 C Interval: 22.5DEG
 Test Speed: HIGH
 Temperature:24.5DEG
 Operators:William
 Test Date:2017-12-19

γ Range: 0 - 180DEG
 γ Interval: 1.0DEG
 Test System:EVERFINE GO-R5000_V2 SYSTEM V2.0.352
 Humidity:65.7%
 Test Distance:26.000m [K=1.4470]
 Remarks:

ZONAL FLUX DIAGRAM

ZONAL FLUX DIAGRAM:

γ	C0	C45	C90	C135	C180	C225	C270	C315	γ	Φ zone	Φ total	%lum, lamp
10	606.5	611.6	618.8	618.0	616.8	619.2	619.1	610.9	0- 10	59.68	59.68	3.41,3.41
20	535.8	552.1	571.6	563.4	551.7	566.1	572.6	552.1	10- 20	166.2	225.9	12.9,12.9
30	435.9	467.4	499.0	478.1	462.7	481.1	500.2	466.7	20- 30	238.3	464.1	26.5,26.5
40	339.7	368.2	409.7	386.2	365.9	389.3	411.2	367.3	30- 40	267.2	731.3	41.8,41.8
50	247.5	275.0	312.7	290.3	271.4	293.8	314.7	275.1	40- 50	256.1	987.4	56.4,56.4
60	162.8	186.6	217.0	198.9	187.8	203.0	219.0	186.5	50- 60	213.7	1201	68.6,68.6
70	89.02	104.7	128.3	118.7	111.8	122.6	130.5	106.3	60- 70	152.0	1353	77.3,77.3
80	29.18	36.22	48.73	48.53	48.25	51.74	51.85	38.12	70- 80	81.97	1435	82,82
90	0.3969	0.6388	0.4092	1.535	1.666	0.9615	0.0007	0.8044	80- 90	20.19	1455	83.1,83.1
100	15.64	16.20	14.50	11.46	10.18	11.29	9.652	15.63	90-100	6.172	1461	83.5,83.5
110	35.46	38.21	38.27	32.96	28.84	32.59	36.06	36.57	100-110	25.16	1487	84.9,84.9
120	58.38	61.13	11.88	57.78	50.82	57.66	27.19	52.55	110-120	43.60	1530	87.4,87.4
130	73.82	89.87	1.510	85.27	76.08	80.78	2.385	85.07	120-130	43.78	1574	89.9,89.9
140	109.7	82.99	1.587	33.74	104.1	72.94	2.622	110.2	130-140	57.43	1631	93.2,93.2
150	14.50	18.27	1.748	129.7	24.36	114.0	3.660	20.07	140-150	43.51	1675	95.6,95.6
160	51.10	130.7	2.384	126.9	125.0	134.5	121.6	136.4	150-160	36.47	1711	97.7,97.7
170	144.5	110.8	3.416	134.5	136.3	144.0	39.26	100.9	160-170	32.67	1744	99.6,99.6
180	2.381	2.077	3.814	2.302	2.302	2.079	3.099	2.535	170-180	7.055	1751	100,100
DEG	LUMINOUS INTENSITY:cd									UNIT:lm		

Conical surface Flux(90deg): 862.93 lm

%lum = 49.3%
%lamp = 49.3%

Conical surface Flux(120deg): 1201.1 lm

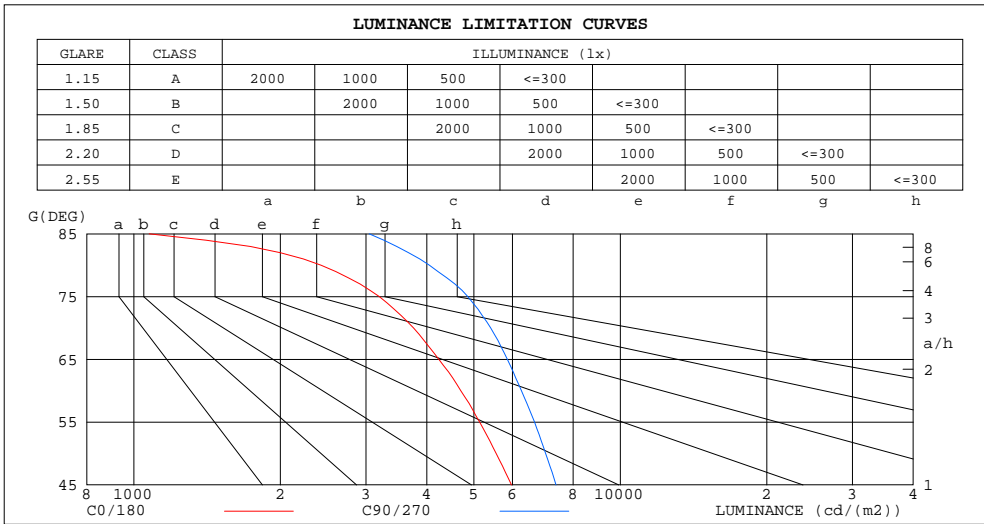
%lum = 68.6%
%lamp = 68.6%

C Range: 0 - 360DEG
C Interval: 22.5DEG
Test Speed: HIGH
Temperature:24.5DEG
Operators:William
Test Date:2017-12-19

γ Range: 0 - 180DEG
γ Interval: 1.0DEG
Test System:EVERFINE GO-R5000_V2 SYSTEM V2.0.352
Humidity:65.7%
Test Distance:26.000m [K=1.4470]
Remarks:

LUMINANCE LIMITATION CURVES

Test:U:230.0V I:0.1352A P:30.04W PF:0.9655 Freq:50.01Hz Lamp Flux:1751.13x1 lm		
NAME:	TYPE:LED	WEIGHT:N/A
SPEC.:N/A	DIM.:	SERIAL No.:N/A
MFR.:	SUR.:	Shielding Angle:N/A



LUMINANCE cd/(m2)		
G(DEG)	C0/180	C90/270
85	1075	3046
80	2425	4049
75	3195	4856
70	3756	5413
65	4236	5856
60	4700	6263
55	5138	6660
50	5557	7019
45	5974	7377

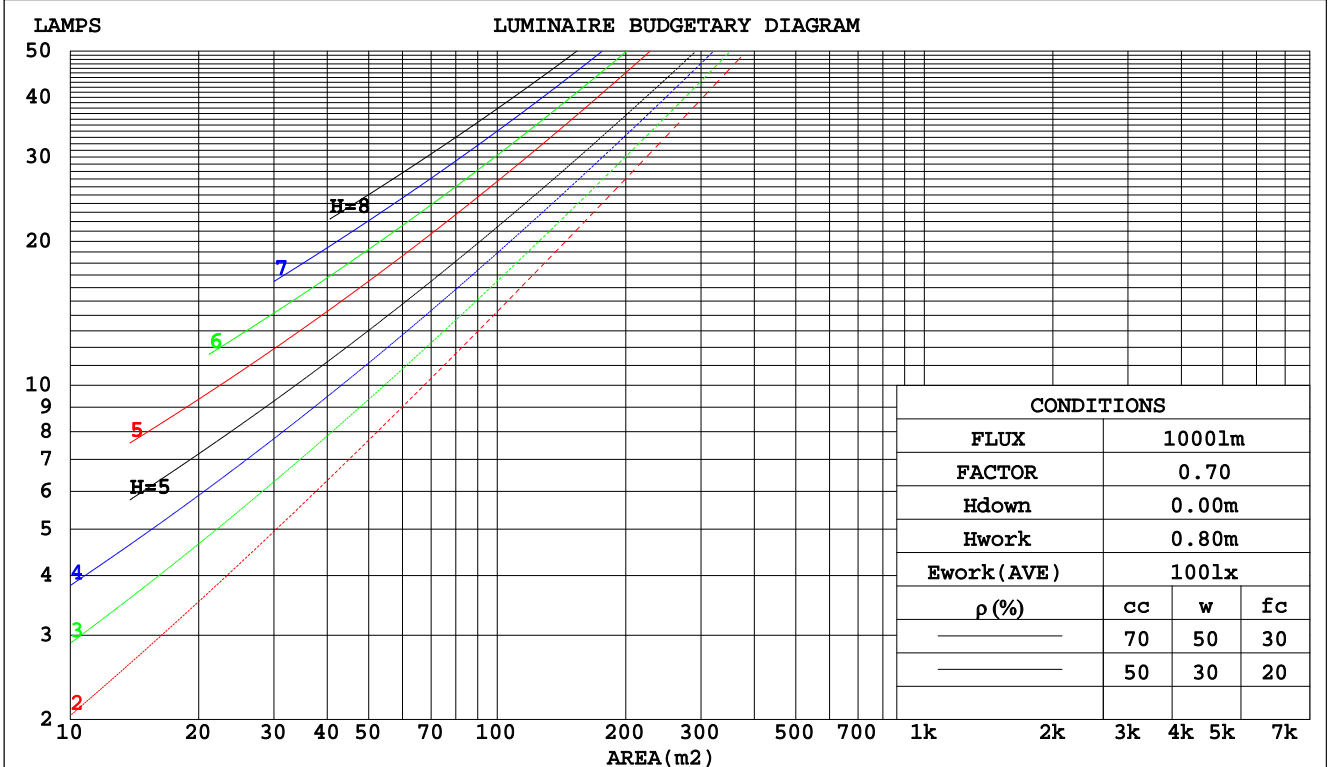
C Range: 0 - 360DEG
 C Interval: 22.5DEG
 Test Speed: HIGH
 Temperature:24.5DEG
 Operators:William
 Test Date:2017-12-19

γ Range: 0 - 180DEG
 γ Interval: 1.0DEG
 Test System:EVERFINE GO-R5000_V2 SYSTEM V2.0.352
 Humidity:65.7%
 Test Distance:26.000m [K=1.4470]
 Remarks:

CU AND LUMINAIRE BUDGETARY ESTIMATE DIAGRAM

Test:U:230.0V I:0.1352A P:30.04W PF:0.9655 Freq:50.01Hz Lamp Flux:1751.13x1 lm		
NAME:	TYPE:LED	WEIGHT:N/A
SPEC.:N/A	DIM.:	SERIAL No.:N/A
MFR.:	SUR.:	Shielding Angle:N/A

pcc	80%			70%			50%			30%			10%			0
	50%	30%	10%	50%	30%	10%	50%	30%	10%	50%	30%	10%	50%	30%	10%	0
pw																0
pfc	20%			20%			20%			20%			20%			0
RCR	RCR:Room Cavity Ratio						Coefficients of Utilization(CU)									
0.0	1.15	1.15	1.15	1.10	1.10	1.10	1.02	1.02	1.02	.94	.94	.94	.87	.87	.87	.83
1.0	1.01	.97	.94	.97	.94	.91	.90	.87	.85	.83	.81	.79	.77	.76	.74	.71
2.0	.89	.83	.77	.86	.80	.75	.79	.75	.71	.74	.70	.67	.68	.65	.63	.60
3.0	.79	.71	.65	.76	.69	.63	.70	.65	.60	.66	.61	.57	.61	.57	.54	.51
4.0	.70	.62	.55	.68	.60	.54	.63	.57	.52	.59	.53	.49	.55	.50	.47	.44
5.0	.63	.54	.48	.61	.53	.47	.57	.50	.45	.53	.47	.43	.50	.45	.41	.39
6.0	.57	.48	.42	.55	.47	.41	.51	.45	.40	.48	.42	.38	.45	.40	.36	.34
7.0	.51	.43	.37	.50	.42	.37	.47	.40	.35	.44	.38	.34	.41	.36	.33	.30
8.0	.47	.39	.33	.46	.38	.33	.43	.36	.32	.40	.35	.31	.38	.33	.29	.27
9.0	.43	.35	.30	.42	.35	.30	.40	.33	.29	.37	.32	.28	.35	.30	.27	.25
10.0	.40	.32	.27	.39	.32	.27	.37	.30	.26	.35	.29	.25	.33	.28	.24	.23



C Range: 0 - 360DEG
 C Interval: 22.5DEG
 Test Speed: HIGH
 Temperature: 24.5DEG
 Operators: William
 Test Date: 2017-12-19

γ Range: 0 - 180DEG
 γ Interval: 1.0DEG
 Test System: EVERFINE GO-R5000_V2 SYSTEM V2.0.352
 Humidity: 65.7%
 Test Distance: 26.000m [K=1.4470]
 Remarks:

WEC AND CCEC

Test:U:230.0V I:0.1352A P:30.04W PF:0.9655 Freq:50.01Hz Lamp Flux:1751.13x1 lm														
NAME:					TYPE:LED					WEIGHT:N/A				
SPEC.:N/A					DIM.:					SERIAL No.:N/A				
MFR.:					SUR.:					Shielding Angle:N/A				

ρcc	80%			70%			50%			30%			10%			0
ρw	50%	30%	10%	50%	30%	10%	50%	30%	10%	50%	30%	10%	50%	30%	10%	0
ρfc	20%			20%			20%			20%			20%			0
RCR	RCR:Room Cavity Ratio						Wall Exitance Coefficients(WEC)									
0.0																
1.0	.283	.161	.051	.271	.155	.049	.248	.143	.046	.228	.131	.042	.208	.121	.039	
2.0	.267	.147	.045	.257	.141	.044	.236	.131	.041	.218	.122	.038	.200	.113	.036	
3.0	.249	.132	.040	.239	.128	.039	.221	.120	.036	.204	.112	.034	.188	.104	.032	
4.0	.231	.120	.035	.222	.116	.034	.205	.109	.033	.190	.102	.031	.176	.095	.029	
5.0	.214	.109	.032	.206	.106	.031	.191	.100	.029	.177	.094	.028	.164	.088	.026	
6.0	.200	.100	.029	.192	.097	.028	.179	.092	.027	.166	.086	.025	.154	.081	.024	
7.0	.186	.092	.026	.180	.090	.026	.167	.085	.024	.155	.080	.023	.144	.075	.022	
8.0	.175	.085	.024	.169	.083	.023	.157	.078	.022	.146	.074	.021	.136	.070	.020	
9.0	.164	.079	.022	.159	.077	.022	.148	.073	.021	.138	.069	.020	.128	.065	.019	
10.0	.155	.074	.021	.150	.072	.020	.140	.068	.019	.130	.065	.018	.121	.061	.018	

ρcc	80%			70%			50%			30%			10%			0
ρw	50%	30%	10%	50%	30%	10%	50%	30%	10%	50%	30%	10%	50%	30%	10%	0
ρfc	20%			20%			20%			20%			20%			0
RCR	RCR:Room Cavity Ratio						Ceiling Cavity Exitance Coefficients(CCEC)									
0.0	.319	.319	.319	.273	.273	.273	.186	.186	.186	.107	.107	.107	.034	.034	.034	
1.0	.308	.286	.266	.264	.246	.229	.180	.169	.158	.104	.098	.092	.033	.031	.030	
2.0	.300	.263	.232	.257	.226	.200	.176	.156	.140	.101	.091	.082	.033	.029	.027	
3.0	.292	.246	.209	.250	.212	.181	.172	.147	.127	.099	.086	.075	.032	.028	.024	
4.0	.284	.233	.193	.244	.201	.168	.168	.140	.118	.097	.082	.070	.031	.027	.023	
5.0	.277	.222	.182	.238	.192	.158	.164	.134	.112	.095	.079	.066	.031	.026	.022	
6.0	.270	.214	.174	.232	.186	.151	.160	.130	.107	.093	.076	.064	.030	.025	.021	
7.0	.264	.208	.168	.227	.180	.146	.157	.126	.104	.091	.074	.062	.029	.024	.020	
8.0	.258	.202	.163	.222	.175	.143	.154	.123	.101	.089	.073	.060	.029	.024	.020	
9.0	.252	.197	.160	.217	.171	.140	.150	.120	.099	.088	.071	.059	.028	.023	.020	
10.0	.247	.193	.157	.213	.168	.137	.148	.118	.097	.086	.070	.058	.028	.023	.019	

C Range: 0 - 360DEG
 C Interval: 22.5DEG
 Test Speed: HIGH
 Temperature:24.5DEG
 Operators:William
 Test Date:2017-12-19

γ Range: 0 - 180DEG
 γ Interval: 1.0DEG
 Test System:EVERFINE GO-R5000_V2 SYSTEM V2.0.352
 Humidity:65.7%
 Test Distance:26.000m [K=1.4470]
 Remarks:

UGR(Unified Glare Rating) Table

Test:U:230.0V I:0.1352A P:30.04W PF:0.9655 Freq:50.01Hz Lamp Flux:1751.13x1 lm										
NAME:					TYPE:LED			WEIGHT:N/A		
SPEC.:N/A					DIM.:			SERIAL No.:N/A		
MFR.:					SUR.:			Shielding Angle:N/A		
ceiling/cavity	0.7	0.7	0.5	0.5	0.3	0.7	0.7	0.5	0.5	0.3
walls	0.5	0.3	0.5	0.3	0.3	0.5	0.3	0.5	0.3	0.3
working plane	0.2	0.2	0.2	0.2	0.2	0.2	0.2	0.2	0.2	0.2
Room dimensions	Viewed crosswise					Viewed endwise				
x = 2H y = 2H	17.0	18.3	17.5	18.7	19.2	18.2	19.5	18.7	19.9	20.4
3H	18.0	19.2	18.6	19.7	20.2	19.5	20.7	20.1	21.2	21.7
4H	18.4	19.4	18.9	20.0	20.5	20.0	21.1	20.6	21.6	22.2
6H	18.6	19.5	19.1	20.1	20.7	20.3	21.3	20.9	21.9	22.5
8H	18.6	19.5	19.1	20.1	20.7	20.4	21.4	21.0	21.9	22.5
12H	18.5	19.4	19.1	20.0	20.6	20.4	21.3	21.0	21.9	22.5
4H 2H	17.6	18.6	18.1	19.2	19.7	18.5	19.6	19.1	20.1	20.7
3H	18.7	19.7	19.3	20.2	20.9	20.0	20.9	20.6	21.5	22.1
4H	19.2	20.0	19.8	20.6	21.3	20.6	21.4	21.2	22.0	22.7
6H	19.4	20.1	20.1	20.8	21.5	21.0	21.8	21.7	22.4	23.1
8H	19.5	20.1	20.1	20.8	21.5	21.1	21.8	21.8	22.4	23.2
12H	19.4	20.0	20.1	20.7	21.4	21.2	21.8	21.9	22.5	23.2
8H 4H	19.4	20.0	20.0	20.7	21.4	20.7	21.3	21.3	22.0	22.7
6H	19.7	20.3	20.4	20.9	21.7	21.2	21.7	21.9	22.4	23.2
8H	19.8	20.3	20.5	20.9	21.7	21.4	21.8	22.1	22.5	23.3
12H	19.8	20.2	20.5	20.9	21.7	21.5	21.9	22.2	22.6	23.4
12H 4H	19.4	20.0	20.0	20.6	21.4	20.6	21.2	21.3	21.9	22.6
6H	19.7	20.2	20.4	20.9	21.7	21.2	21.7	21.9	22.3	23.1
8H	19.8	20.2	20.5	20.9	21.7	21.4	21.8	22.1	22.5	23.3
Variations with the observer position at spacings:										
S = 1.0H	+ 0.3 / - 0.3					+ 0.2 / - 0.2				
1.5H	+ 0.2 / - 0.3					+ 0.1 / - 0.2				
2.0H	+ 0.3 / - 0.5					+ 0.4 / - 0.4				

CIE Pub.117 Corrected 1751 lm Total Lamp Luminous Flux.(8log(F/F0) = 1.9)

C Range: 0 - 360DEG
 C Interval: 22.5DEG
 Test Speed: HIGH
 Temperature:24.5DEG
 Operators:William
 Test Date:2017-12-19

γ Range: 0 - 180DEG
 γ Interval: 1.0DEG
 Test System:EVERFINE GO-R5000_V2 SYSTEM V2.0.352
 Humidity:65.7%
 Test Distance:26.000m [K=1.4470]
 Remarks:

UTILIZATION FACTORS TABLE

Test:U:230.0V I:0.1352A P:30.04W PF:0.9655 Freq:50.01Hz Lamp Flux:1751.13x1 lm		
NAME:	TYPE:LED	WEIGHT:N/A
SPEC.:N/A	DIM.:	SERIAL No.:N/A
MFR.:	SUR.:	Shielding Angle:N/A

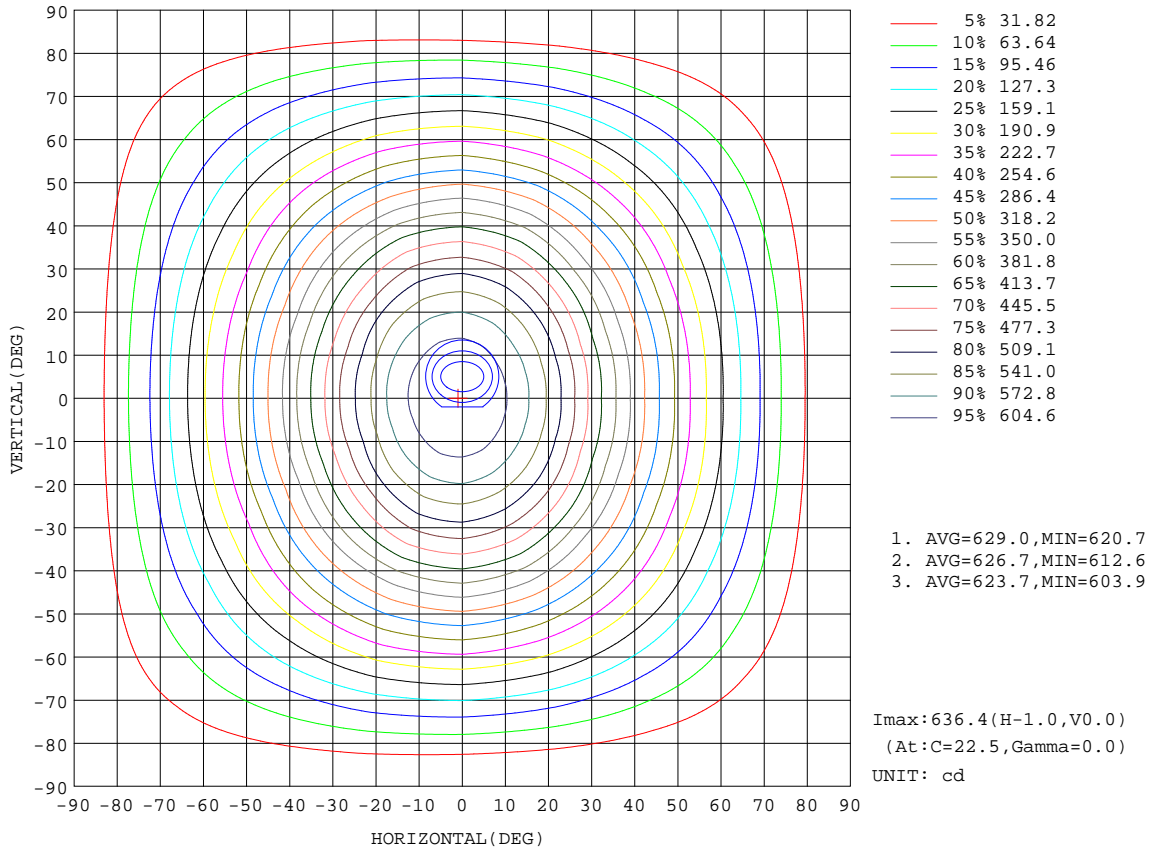
REFLECTANCE										
Ceiling	0.8	0.8	0.8	0.7	0.7	0.7	0.5	0.5	0.5	0
Walls	0.7	0.5	0.3	0.7	0.5	0.3	0.7	0.5	0.3	0
Working plane	0.2	0.2	0.2	0.2	0.2	0.2	0.2	0.2	0.2	0
ROOM INDEX	UTILIZATION FACTORS(PERCENT) $k(RI) \times RCR = 5$									
k = 0.60	56	45	38	54	44	38	52	43	37	31
0.80	65	54	47	64	53	47	61	52	46	38
1.00	73	63	56	71	61	55	67	61	53	45
1.25	80	70	63	78	69	62	73	66	60	51
1.50	85	75	69	82	74	67	77	70	65	55
2.00	92	83	77	89	81	75	83	77	72	61
2.50	95	88	82	92	85	80	86	80	76	64
3.00	99	92	87	95	89	84	88	84	80	67
4.00	103	97	92	99	94	90	92	88	85	71
5.00	105	100	96	101	97	93	93	90	87	73
ROOM INDEX	UF(total)									Direct
According to DIN EN 13032-2 2004			Suspended				SHRNOM = 1.25			

C Range: 0 - 360DEG
 C Interval: 22.5DEG
 Test Speed: HIGH
 Temperature:24.5DEG
 Operators:William
 Test Date:2017-12-19

γ Range: 0 - 180DEG
 γ Interval: 1.0DEG
 Test System:EVERFINE GO-R5000_V2 SYSTEM V2.0.352
 Humidity:65.7%
 Test Distance:26.000m [K=1.4470]
 Remarks:

ISOCANDELA DIAGRAM

Test:U:230.0V I:0.1352A P:30.04W PF:0.9655 Freq:50.01Hz Lamp Flux:1751.13x1 lm		
NAME:	TYPE:LED	WEIGHT:N/A
SPEC.:N/A	DIM.:	SERIAL No.:N/A
MFR.:	SUR.:	Shielding Angle:N/A

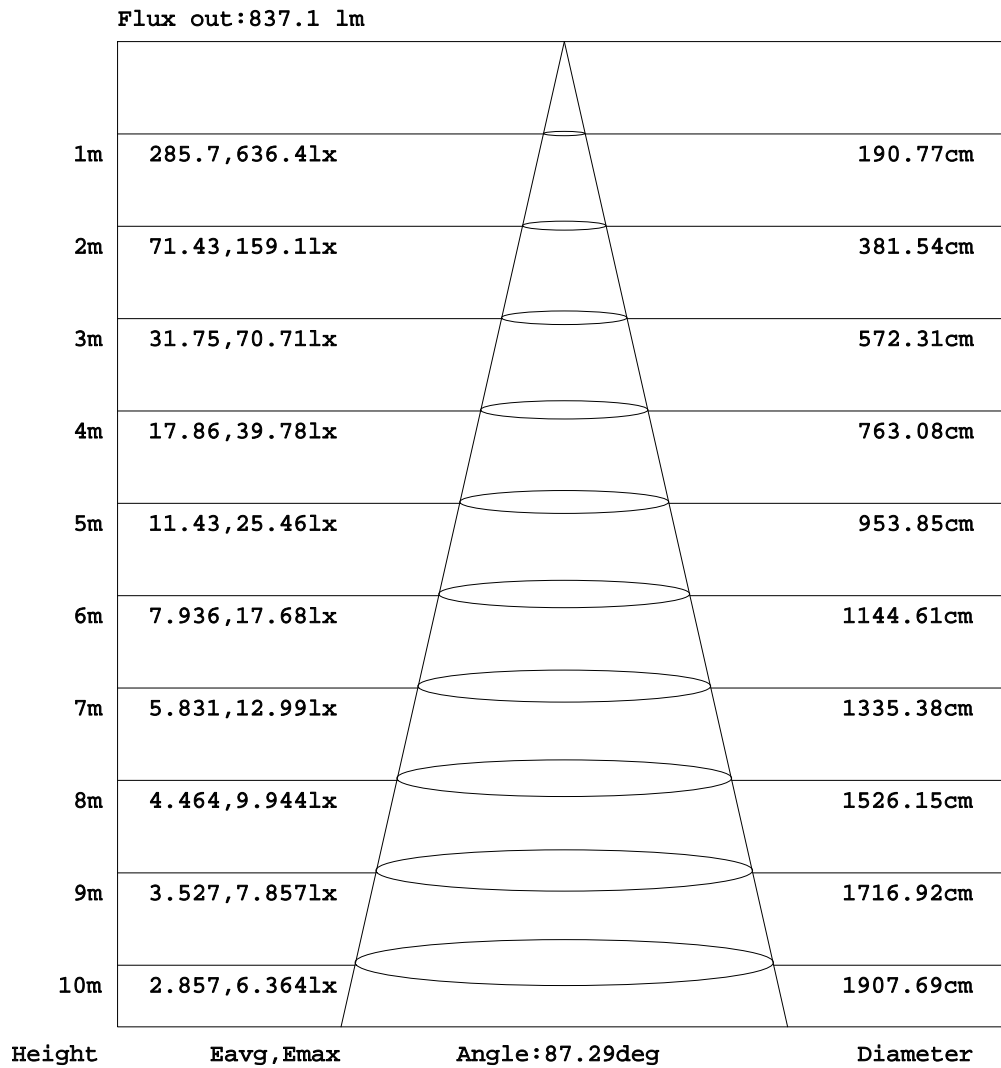


C Range: 0 - 360DEG
 C Interval: 22.5DEG
 Test Speed: HIGH
 Temperature:24.5DEG
 Operators:William
 Test Date:2017-12-19

γ Range: 0 - 180DEG
 γ Interval: 1.0DEG
 Test System:EVERFINE GO-R5000_V2 SYSTEM V2.0.352
 Humidity:65.7%
 Test Distance:26.000m [K=1.4470]
 Remarks:

AAI Figure

Test:U:230.0V I:0.1352A P:30.04W PF:0.9655 Freq:50.01Hz Lamp Flux:1751.13x1 lm		
NAME:	TYPE:LED	WEIGHT:N/A
SPEC.:N/A	DIM.:	SERIAL No.:N/A
MFR.:	SUR.:	Shielding Angle:N/A



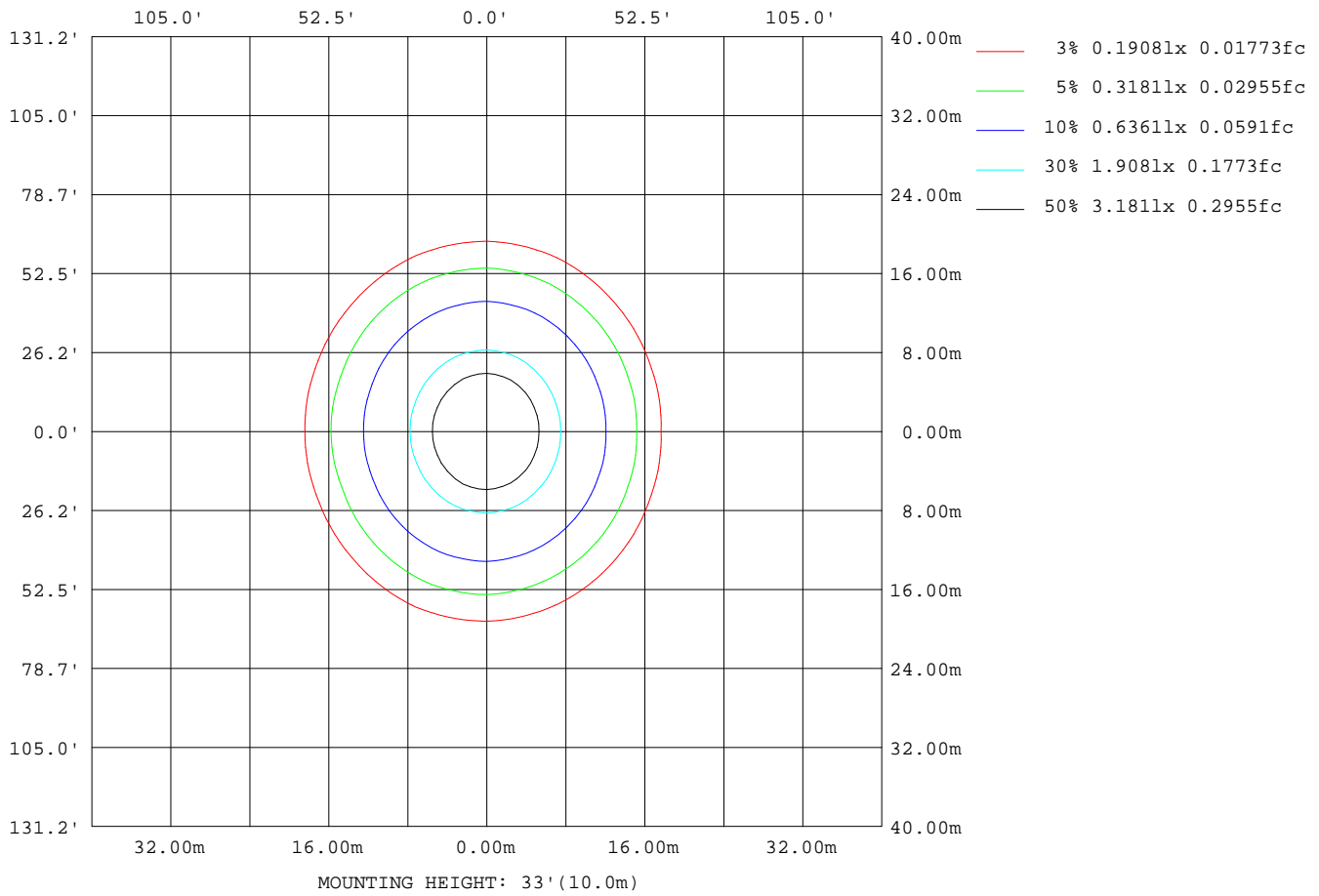
Note:The Curves indicate the illuminated area and the average illumination when the luminaire is at different distance.

C Range: 0 - 360DEG
 C Interval: 22.5DEG
 Test Speed: HIGH
 Temperature:24.5DEG
 Operators:William
 Test Date:2017-12-19

γ Range: 0 - 180DEG
 γ Interval: 1.0DEG
 Test System:EVERFINE GO-R5000_V2 SYSTEM V2.0.352
 Humidity:65.7%
 Test Distance:26.000m [K=1.4470]
 Remarks:

ISOLUX DIAGRAM

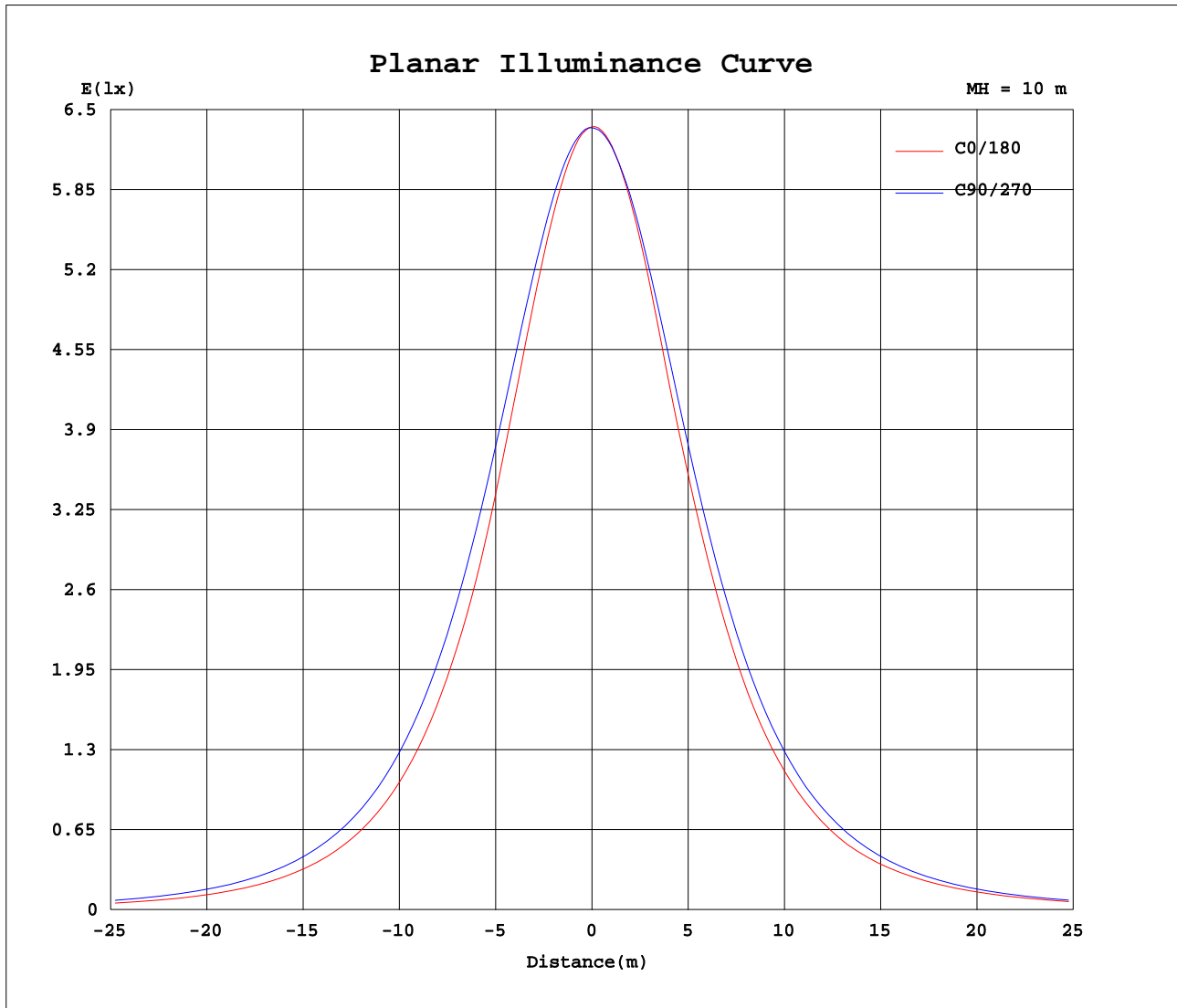
Test:U:230.0V I:0.1352A P:30.04W PF:0.9655 Freq:50.01Hz Lamp Flux:1751.13x1 lm		
NAME:	TYPE:LED	WEIGHT:N/A
SPEC.:N/A	DIM.:	SERIAL No.:N/A
MFR.:	SUR.:	Shielding Angle:N/A



C Range: 0 - 360DEG
 C Interval: 22.5DEG
 Test Speed: HIGH
 Temperature:24.5DEG
 Operators:William
 Test Date:2017-12-19

γ Range: 0 - 180DEG
 γ Interval: 1.0DEG
 Test System:EVERFINE GO-R5000_V2 SYSTEM V2.0.352
 Humidity:65.7%
 Test Distance:26.000m [K=1.4470]
 Remarks:

Planar Illuminance Curve



C Range: 0 - 360DEG
C Interval: 22.5DEG
Test Speed: HIGH
Temperature: 24.5DEG
Operators: William
Test Date: 2017-12-19

γ Range: 0 - 180DEG
 γ Interval: 1.0DEG
Test System: EVERFINE GO-R5000_V2 SYSTEM V2.0.352
Humidity: 65.7%
Test Distance: 26.000m [K=1.4470]
Remarks:

LUMINOUS DISTRIBUTION INTENSITY DATA

Test:U:230.0V I:0.1352A P:30.04W PF:0.9655 Freq:50.01Hz Lamp Flux:1751.13x1 lm		
NAME:	TYPE:LED	WEIGHT:N/A
SPEC.:N/A	DIM.:	SERIAL No.:N/A
MFR.:	SUR.:	Shielding Angle:N/A

Table--1

UNIT: cd

C(DEG) γ (DEG)	0	22.5	45	67.5	90	112.5	135	157.5	180	202.5	225	247.5	270	292.5	315	337.5			
0	636	636	636	636	635	635	635	635	636	636	636	636	635	635	635	635			
5	627	628	629	631	631	632	632	632	632	632	632	632	631	630	627	627			
10	606	608	612	617	619	620	618	616	617	618	619	620	619	616	611	607			
15	576	578	585	594	598	599	595	591	591	593	596	600	600	594	585	578			
20	536	541	552	564	572	571	563	553	552	556	566	572	573	565	552	540			
25	488	495	513	528	537	537	524	509	507	511	526	538	539	530	512	495			
30	436	444	467	487	499	497	478	464	463	467	481	499	500	489	467	444			
35	388	394	418	443	456	453	433	416	415	420	435	455	457	445	418	394			
40	340	348	368	396	410	405	386	367	366	371	389	408	411	399	367	347			
45	293	300	321	347	361	355	337	320	318	323	342	358	364	350	321	300			
50	248	255	275	298	313	308	290	273	271	277	294	308	315	301	275	255			
55	204	211	230	250	265	261	245	226	227	230	248	262	267	253	230	211			
60	163	170	187	204	217	215	199	187	188	191	203	216	219	207	186	170			
65	124	129	144	162	172	170	158	148	149	152	161	171	174	164	145	131			
70	89.0	92.8	105	119	128	127	119	110	112	114	123	129	131	121	106	94.6			
75	57.3	60.0	68.2	79.5	87.1	87.6	81.3	76.4	78.4	79.7	85.4	90.2	89.9	82.2	70.1	61.6			
80	29.2	30.7	36.2	43.6	48.7	50.6	48.5	46.0	48.2	49.3	51.7	53.8	51.8	46.3	38.1	32.5			
85	6.49	7.12	10.1	15.0	18.4	20.8	20.7	20.3	22.3	22.3	23.0	22.9	20.3	17.0	11.8	8.61			
90	0.40	0.48	0.64	0.56	0.41	0.99	1.54	1.76	1.67	1.43	0.96	0.70	0.00	0.24	0.80	0.97			
95	7.10	6.99	6.94	6.25	4.59	4.25	3.87	3.48	3.61	3.46	3.87	4.02	1.77	6.01	6.64	7.07			
100	15.6	15.9	16.2	16.0	14.5	13.4	11.5	10.2	10.2	10.1	11.3	12.7	9.65	15.1	15.6	15.4			
105	25.3	25.7	26.7	27.6	26.5	24.8	21.7	19.8	19.1	19.4	21.4	23.8	22.4	21.4	25.6	25.0			
110	35.5	36.3	38.2	40.4	38.3	37.3	33.0	29.8	28.8	29.6	32.6	36.2	36.1	36.4	36.6	35.1			
115	46.5	47.7	50.7	53.9	26.7	50.5	44.9	41.3	39.3	40.9	44.7	43.6	39.6	49.4	39.0	46.3			
120	58.4	56.8	61.1	65.2	11.9	64.6	57.8	53.1	50.8	52.8	57.7	54.4	27.2	63.8	52.6	50.0			
125	68.6	62.9	70.7	1.38	1.51	1.67	71.2	66.0	62.9	65.3	70.9	1.28	6.71	52.3	59.4	59.0			
130	73.8	76.7	89.9	0.80	1.51	45.1	85.3	79.3	76.1	78.7	80.8	78.1	2.38	0.80	85.1	70.6			
135	84.9	98.6	103	67.0	1.51	80.4	99.8	93.3	90.7	92.8	90.4	93.8	2.62	25.8	99.2	94.4			
140	110	113	83.0	93.3	1.59	94.2	33.7	108	104	105	72.9	90.8	2.62	42.8	110	109			
145	124	128	1.28	119	1.75	117	2.54	123	118	117	2.32	90.8	3.02	91.1	1.19	123			
150	14.5	1.51	18.3	140	1.75	136	130	2.78	24.4	2.39	114	111	3.66	109	20.1	1.35			
155	1.51	1.43	130	138	2.14	136	129	119	3.48	38.8	125	120	105	120	110	7.18			
160	51.1	107	131	133	2.38	131	127	123	125	131	134	130	122	132	136	110			
165	130	132	133	123	2.78	120	130	129	128	131	144	138	110	30.2	135	145			
170	144	142	111	97.0	3.42	53.0	135	130	136	138	144	144	39.3	3.89	101	99.9			
175	139	78.6	95.6	28.6	3.73	2.94	31.8	110	128	128	110	63.9	3.10	3.89	76.4	76.6			
180	2.38	1.92	2.08	3.03	3.81	2.39	2.30	2.54	2.30	2.31	2.08	2.31	3.10	3.89	2.53	2.30			

C Range: 0 - 360DEG
 C Interval: 22.5DEG
 Test Speed: HIGH
 Temperature:24.5DEG
 Operators:William
 Test Date:2017-12-19

γ Range: 0 - 180DEG
 γ Interval: 1.0DEG
 Test System:EVERFINE GO-R5000_V2 SYSTEM V2.0.352
 Humidity:65.7%
 Test Distance:26.000m [K=1.4470]
 Remarks: